

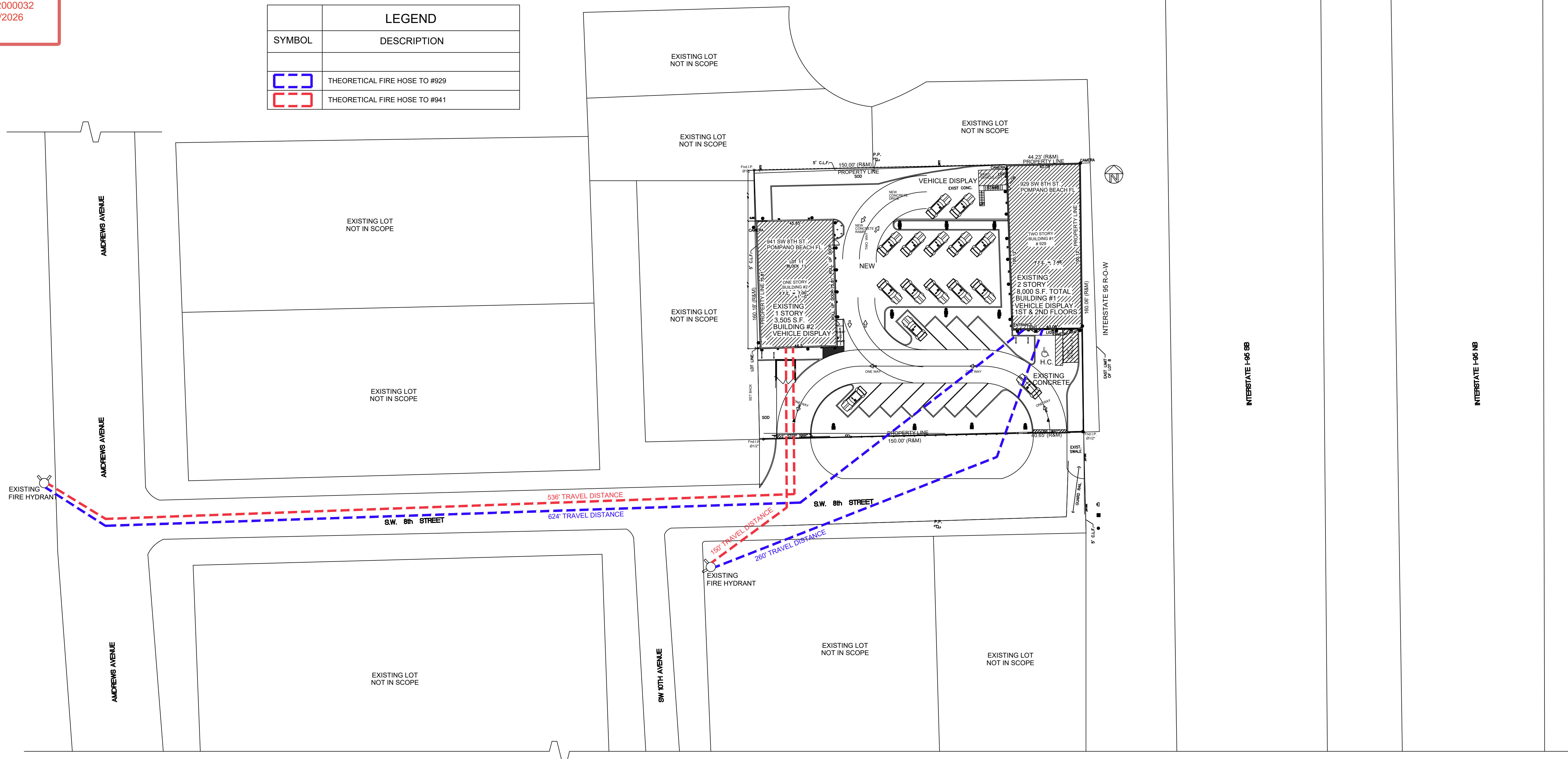




LEGEND	
SYMBOL	DESCRIPTION
	THEORETICAL FIRE HOSE TO #929
	THEORETICAL FIRE HOSE TO #941



REQUIRED FIRE FLOW DATA				
SQUARE FOOTAGE	CONSTRUCTION TYPE	REQUIRED FLOW AS PER 18.4.5.2.1	REDUCTIONS	TOTAL REQUIRED FIRE FLOW
BLDG #941: 4,949 SF	III	1,750 GPM	-75% (BUILDING WILL BE PROTECTED THROUGHOUT BY AN APPROVED AUTOMATIC SPRINKLER SYSTEM, SPRINKLER SYSTEM DRAWINGS BY OTHERS IN FUTURE)	437.5 GPM
BLDG #929: 8,000 SF				
TOTAL SF: 12,949				

NOTE: BOTH BUILDINGS WHICH ARE EXISTING ARE TO HAVE FIRE SPRINKLER SYSTEMS INSTALLED. DRAWINGS FOR FIRE SPRINKLERS BY OTHERS IN FUTURE.

[illegible]

DON ARPIN
P.E. 28585

APPROVED SEAL/SIGNATURE

DON ARPIN MSPE PE #28585
ASSOCIATED GENERAL KINETICS, LLC
COA #26073

KIN 3

21

—

THE NEW AUTO TOY STORE

929 & 941 S.W. 8TH STREET
POMPANO BEACH, FLORIDA 33069

DRAWN:

DATE:
7/29/2025

PROJECT NUMBER:

SHEET NUMBER:

SP-3

SP-3

FIRE DEPARTMENT SITE PLAN

SCALE: 1/32"=1'-0"

DRC

PZ25-12000032

09/03/2025